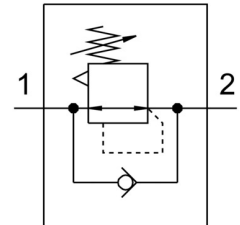


Pressure regulator MS2-LR-QS6-D6-A8-B

Part number: 8086640

FESTO



Data sheet

Feature	Value
Size	2
Type code	MS2-LR
Series	MS
Actuator lock	Rotary knob with detent
Mounting position	Any
Structural design	Directly controlled diaphragm regulator
Controller function	Outlet pressure constant With secondary exhausting With return flow function
Symbol	00991559
Pressure gauge	G1/8 prepared
Operating pressure	0.1 MPa ... 0.8 MPa
Operating pressure	1 bar ... 8 bar
Pressure regulation range	0.5 bar ... 7 bar
Max. pressure hysteresis	0.25 bar
Standard nominal flow rate	350 l/min
Operating medium	Compressed air as per ISO 8573-1:2010 [7:4:4] Inert gas
Corrosion resistance class (CRC)	1 - Low corrosion stress
Storage temperature	-5 °C ... 50 °C
Temperature of medium	-5 °C ... 50 °C
Ambient temperature	-5 °C ... 50 °C
Product weight	31.6 g
Type of mounting	Optionally: Front panel mounting Line installation With accessories
Pneumatic connection 1	QS-6
Pneumatic connection 2	QS-6
Note on materials	RoHS-compliant
Lower cover material	PA
Seals material	NBR
Rotary knob material	POM
Material of spring	High-alloy steel
Housing material	PA
Diaphragm material	NBR

Feature	Value
Valve tappet material	Wrought aluminum alloy NBR